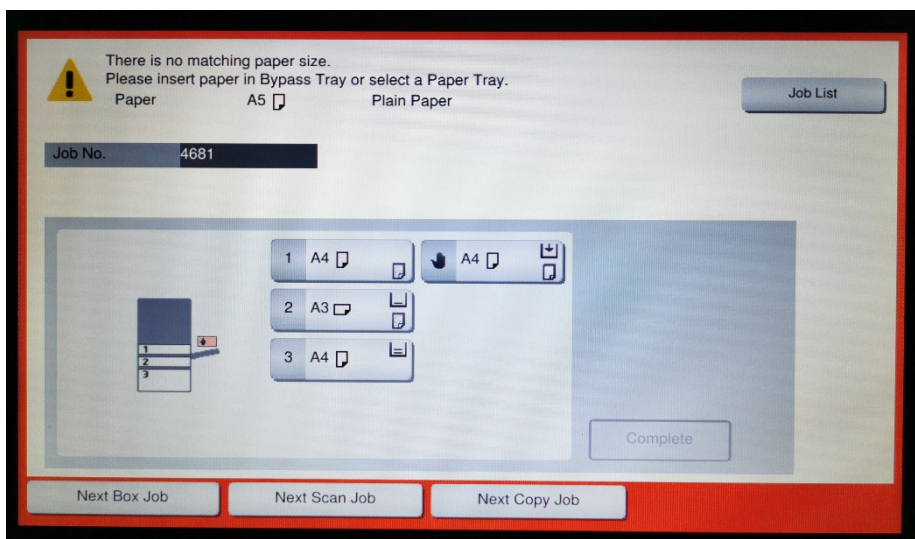




Problems when printing “No matching paper size”.

If the following error message appears when printing, it is because the document you are trying to print is in a format that is not included as a standard option on that printer.

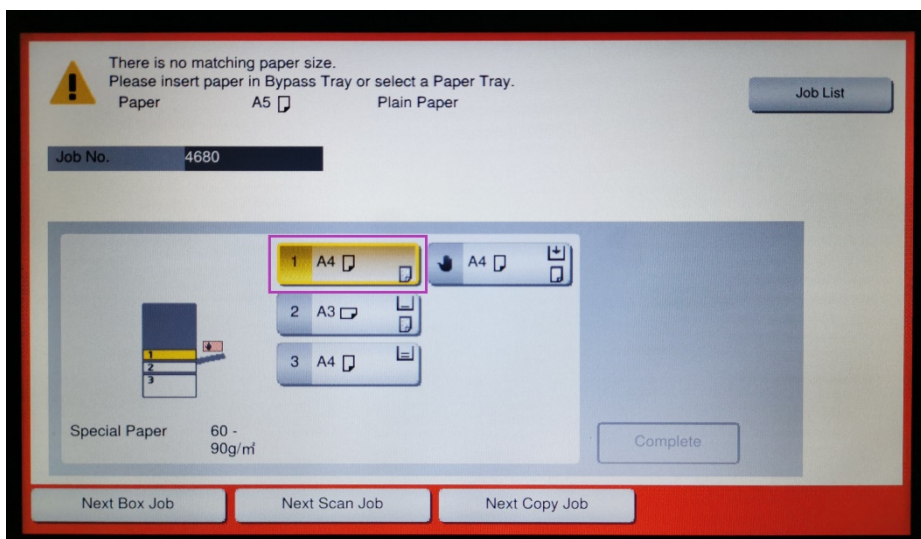


To be able to print when the error message pops up, you have to select the tray you wish the paper to be retrieved from.

For example, Tray 1 A4.

Then press the blue button.

The printout will then be automatically adjusted to A4 size paper.



Printing with a different paper size

If you need to print in a paper size that is not included as an alternative in the trays, such as A5, you can do so according to the instructions below.

Load the paper you want to use in the bypass tray on the right side of the printer.

Adjust the rail to the correct size for the paper.

Then select the Bypass Tray 4 option, the icon with a hand, and press the blue print button.

